



May, 2008

Volume 1, Issue 1



PATHWAYS

A NEWSLETTER FOR STUDENTS OF
VETERINARY PATHOLOGY

Welcome to PATHways!

Welcome to the first issue of PATHways, a joint publication of the American College of Veterinary Pathologists (ACVP) and the Society of Toxicologic Pathology (STP).

The STP Career Outreach Committee and the ACVP recruiting committee are interested in keeping students informed about the different facets of veterinary pathology and what makes veterinary pathology such an exciting career choice!

We hope that PATHways will provide a mechanism for us to keep you informed about the field of veterinary pathology, including career paths, current events,



exciting technologies, case studies, biosketches, and even topics suggested by, and articles written by, YOU!

We are planning on publishing PATHways biannually, so if you have any suggestions for topics or would like to make a contribution to the fall issue, feel free to contact the co-editors, Brett Saladino or Sarah Tannehill-Gregg.

Thanks! And remember, **the best way to learn about anything is to get involved and immerse yourself!**

Inside this issue:

A Day In the Life Of...	2
Case Report	3
Upcoming Events	4-6
Contact Information	4

We're on the Web!

www.toxpath.org

www.acvp.org

Veterinary Pathology: More Than Meets the Eye

Where do Veterinary Pathologists Work?

- **Diagnostic Pathology**
 - Contract Laboratory
 - University
 - Diagnostic Laboratory
- **Consulting**
- **Academia/Research**
 - Veterinary School
 - Medical School

- **Government**
 - NIEHS
 - Military
 - CDC
 - EPA
 - NIH
 - USDA

- **Toxicologic Pathology**
 - Pharmaceutical Company
 - University
 - Chemical Company
 - Biotechnology Company



A DAY IN THE LIFE OF.....

Krista M.D. La Perle, BS, DVM, PhD, Diplomate ACVP (Anatomic)

Who is your current employer?

Since 2002, I have been employed by a tri-institutional collaborative in New York, NY

- Memorial Sloan-Kettering Cancer Center
- Weill Cornell Medical College
- Rockefeller University

My official roles include:

- Director of the Tri-Institutional Laboratory of Comparative Pathology & Genetically Engineered Mouse Phenotyping Service
- Associate Laboratory Member (Sloan-Kettering Institute of MSKCC)
- Assistant Professor of Pathology and Laboratory Medicine (WCMC).

Where did you do your training?

- 1988 – 1992, BS, Animal Science, North Carolina State University
- 1992 – 1996, DVM, North Carolina State University
- 1996 – 2002, Anatomic Pathology Residency & PhD, The Ohio State University
- 2001, Diplomate, American College of Veterinary Pathologists

What are some of your day-to-day duties?

- I direct a fully functioning diagnostic lab for laboratory animals utilized in research. Services provided include hematology, microbiology, serology, parasitology, anatomic pathology (necropsy, biopsy, slide evaluation), histology, immunohistochemistry, radiography, and environmental monitoring (water quality, feed analysis, autoclave/equipment washer validation).
- I supervise 8 laboratory technicians and 2 board-certified pathologists.

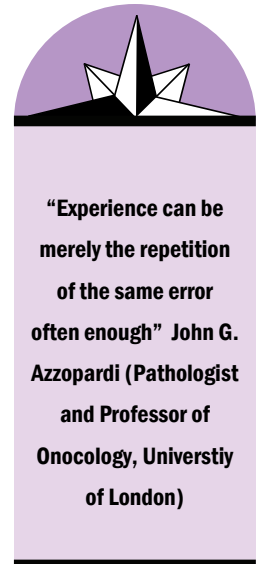
- I provide pathology support for various species of laboratory animals (mice, rats, hamsters, guinea pigs, rabbits, dogs, non-human primates, birds, frogs, zebrafish) utilized in various types of research.
- I engage in collaborative research with select investigators to whom I provide research pathology.
- I train laboratory animal (tri-institutes, 6 at a time) and anatomic pathology (tri-institutes and The Animal Medical Center, 2 at a time) residents during their 3-year programs.
- I teach histology to first year medical students.

What do you like most about veterinary pathology?

The variety! Every day brings a new challenge – a different species, a different organ system, a different disease process. And it gives me the opportunity to utilize all the various disciplines we learned in veterinary school during the process of interpreting a case.

Advice for students interested in veterinary pathology as a career?

Seek out a variety of pathology experiences in veterinary school as well as in your residency...you never know what type of position you will find yourself in as your career evolves.



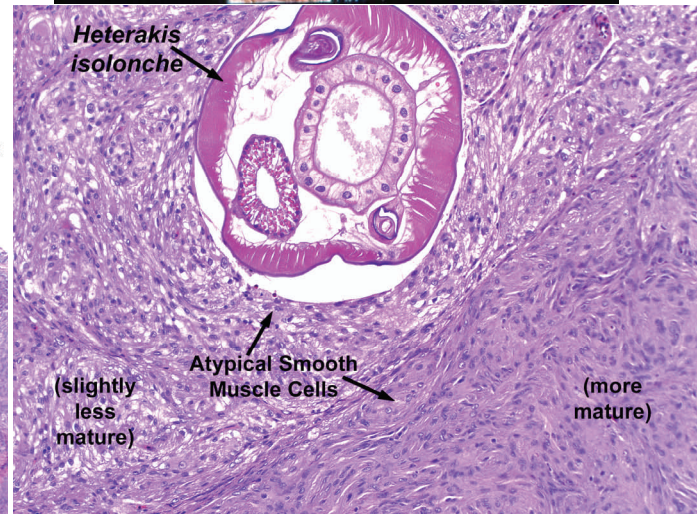
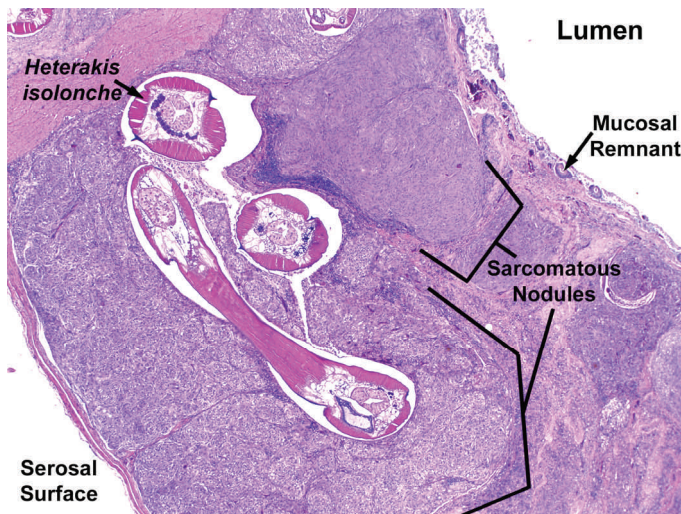
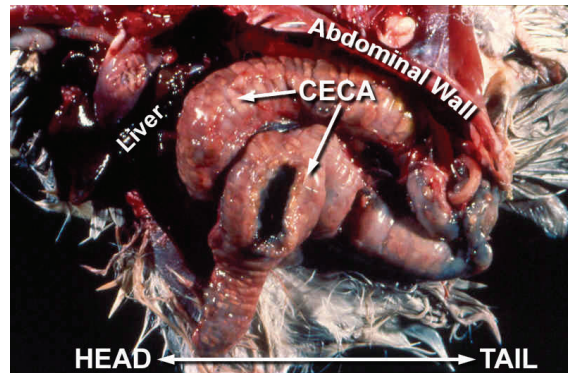
Case Report

THE CASE OF THE PHAILING PHEASANT

Signalment: 5-year-old female Golden Pheasant

History: Failure to fly for 1 month. Anorectic, ataxic and lethargic. Coop mate unaffected. Bird was cachectic and obtunded with a palpable left caudal abdominal mass.

Gross Findings: The large intestine and ceca were markedly dilated with widespread, transmural, 2 mm to 1 cm, tan, firm nodules. Cecal contents were blackish-green with numerous, 1.5 cm long, thread-like white worms.



Histologic Description: The submucosa and muscle layers are effaced by numerous coalescing nodules mostly characterized by whorls of pleomorphic fusiform cells with indistinct cell borders, vesicular nuclei, prominent nucleoli, and ample, often vacuolated eosinophilic cytoplasm. Mitotic figures are absent. Nodules frequently contain sections of mature viable nematodes and are associated with variable numbers of lymphocytes, plasma cells, and macrophages. Granulomas* with large numbers of degenerate heterophils and multinucleated giant cells are also present.

Comments: Pheasants ingest embryonated eggs or earthworms and hatched larvae enter the cecal mucosa, developing into maturity in the submucosal nodules. The histologic nature of these nodules is controversial. Early lesions are inflammatory and often associated with degenerate nematodes, while mature nodules have a sarcomatous appearance and are often associated with viable nematodes. Masson's Trichrome stain fails to demonstrate collagen in sarcomatous nodules, while immunohistochemistry will demonstrate desmin immunoreactivity. Morphologic features suggest a diagnosis of leiomyoma. Other examples of parasite-induced neoplasia are esophageal fibrosarcomas and osteosarcomas in dogs due to *Spirocerca lupi*. *[The heterophilic granulomas are not visible in the photomicrographs presented here]

Diagnosis: Cecum: chronic, widespread, marked typhlitis characterized by multifocal heterophilic granulomas*, nodular proliferations of atypical smooth muscle cells and intralumenal nematodes.

Etiology: *Heterakis isolonche*

Upcoming Events

June 2

Abstract submission deadline, 2008 ACVP Meeting

June 2-6

AFIP 17th Annual Descriptive Veterinary Pathology Course Bethesda, MD

June 22-26

Society of Toxicologic Pathology 2008 Symposium, San Francisco, CA

August 5-8

AFIP 51st Pathology of Laboratory Animals Bethesda, MD

August 7-8

Meeting of the Midwest Association of Veterinary Pathologists* College Corner, OH

September 14-16

RTP Rodent Pathology Course- Immunopathology** Research Triangle Park, NC

September 23-25

ACVP Certifying Examination Ames, IA

October 11-12

Northeastern Veterinary Pathology Conference*** Saratoga Springs, NY

November 15-19

American College of Veterinary Pathologists 2008 Annual Meeting San Antonio, TX

More Upcoming Events on following pages...

**AMERICAN COLLEGE OF
VETERINARY
PATHOLOGISTS**

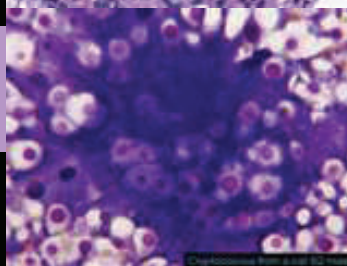
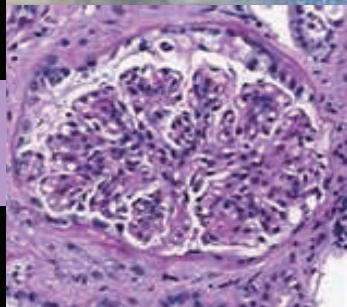
2810 Crossroads Drive
Suite 3800
Madison, Wisconsin 53718

Phone: 608-443-2466
Fax: 608-442-2474
Email: membership@acvp.org

**SOCIETY OF
TOXICOLOGIC
PATHOLOGY**

1821 Michael Faraday Drive
Suite 300
Reston, VA 20190

Phone: 703-438-7508
Fax: 703-438-3113
Email: stp@toxpath.org



Committee Members

Feel free to contact committee members with questions or for advice

ACVP Recruiting Committee
Student Chapter Subcommittee

Chair: Brett Saladino
(brett.saladino@covance.com)

Members:
Rani Sellers
(ranisellers1967@yahoo.com)

Krista La Perle
(laperlek@mskcc.org)

Stephanie Corn
(stephanie-corn@idexx.com)

Amanda Fales-Williams
(afales@iastate.edu)

Frank Geoly
(frank.j.geoly@pfizer.com)

STP Career Outreach Committee
Student Interactions Subcommittee

Chair: Sarah Tannehill-Gregg
(sarah.tannehill-gregg@bms.com)

Members:
Suzanne Botts
(suzanne.x.botts@gsk.com)

Christine Merrill
(christine.l.merrill@gsk.com)

Brett Saladino
(brett.saladino@covance.com)

David Hutto
(david.hutto@biogenidec.com)

Tom Brown
(Thomas.P.Brown@pfizer.com)

Brian Berridge
(brian.x.berridge@gsk.com)

*For more information go to <http://www.cvm.uiuc.edu/mavp>

** Information coming soon <http://www.cvm.ncsu.edu/conted/>

*** Information coming soon http://med.cornell.edu/research/rea_sup/nevpc/

X

Whoever said GEN PATH can't be
FUN?!



Catch THIS Wave!!!

Spend the day with "McGavin and Zachary"* and your evenings with family and friends on the beach in beautiful St. Pete Island, FL! It's a party like no other that you will EVER attend, guaranteed! Whether you are a pathologist in training, or just looking to catch up, this is an event you won't want to miss !!!

**McGavin and Zachary: Pathologic Basis of Veterinary Disease, 4th Ed

The 1st Annual Davis Foundation General Pathology Beach Party

7-11 July 2008
Sirata Beach Resort,
St. Pete's Beach, FL
Course Director: Dr. Bruce Williams
(202) 782-2650, williams@cldavis.org

For more info, visit:
[http://www.cldavis.org/courses/
upcoming.html#55](http://www.cldavis.org/courses/upcoming.html#55)





Topics In Laboratory Animal Medicine



Date May 15-18, 2008

Location: NCSU College of Vet Med
South Theatre, Raleigh, NC

Program Director: David M. Kurtz,
Experimental Pathology Laboratories, Inc.
(919) 541-5155 dkurtz@epl-inc.com



This symposium will present relevant topics in Laboratory Animal Medicine with an emphasis on the ACLAM primary species and recent literature. The NIEHS slide collection on biology and diseases of lab animal species, as well as the Foundation's collection of video lectures will be available for individual study.



Mice -- Equipment -- Ferrets
Literature Review -- Fish
Biosafety and Biocontainment
NHP Secondary Species
Swine -- Dogs
Mock ACLAM Exam

Tuition:

Members: \$275

Nonmembers: \$350

For more info, visit:

<http://www.cldavis.org/courses/upcoming.html>



Wyeth

 **MARSHALL**
BioResources